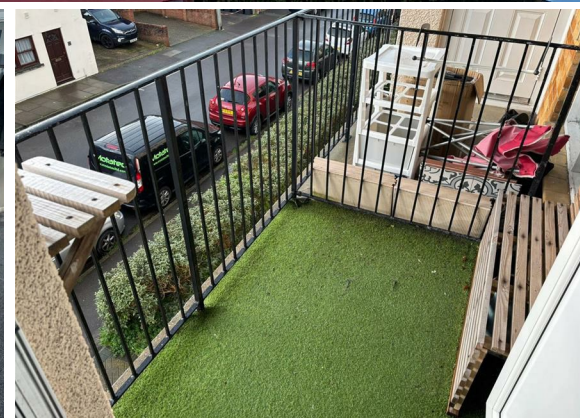
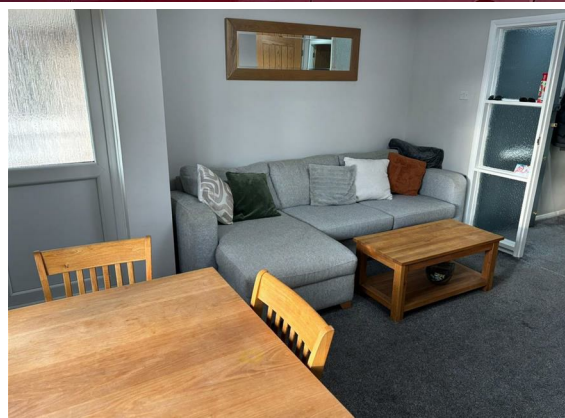
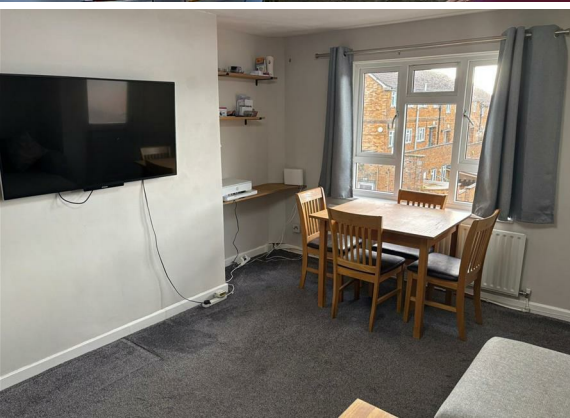




## 2 Bed Apartment located in

**£950 Per Month**



PROFESSIONAL SERVICE  
PERSONAL APPROACH



SECOND FLOOR FLOOR



CHAPELHAY HEIGHTS

Whilst every attempt has been made to ensure the accuracy of the floorplan contained here, measurements of doors, windows, rooms and any other items are approximate and no responsibility is taken for any error, omission or mis-statement. This plan is for illustrative purposes only and should be used as such by any prospective purchaser. The services, systems and appliances shown have not been tested and no guarantee as to their operability or efficiency can be given.  
Made with Metropix ©2025

DIRECTIONS

CONTACT

11 Frederick Place  
St Thomas Street  
Weymouth  
Dorset  
DT9 3NL

E: [admin@rogermcghee.co.uk](mailto:admin@rogermcghee.co.uk)  
T: 01305 779655  
[www.rogermcghee.co.uk](http://www.rogermcghee.co.uk)

